

Website: www.hwoodturners.org

TUTOR: Clive Wilson 027 491 3868
cdwilson@xtra.co.nz

Issue No **32** Friday 9th September



**Hamilton
Woodturners
Club**

Tutor's comment

What a sad day for the Commonwealth as we awaken to the news of the death of Queen Elizabeth.

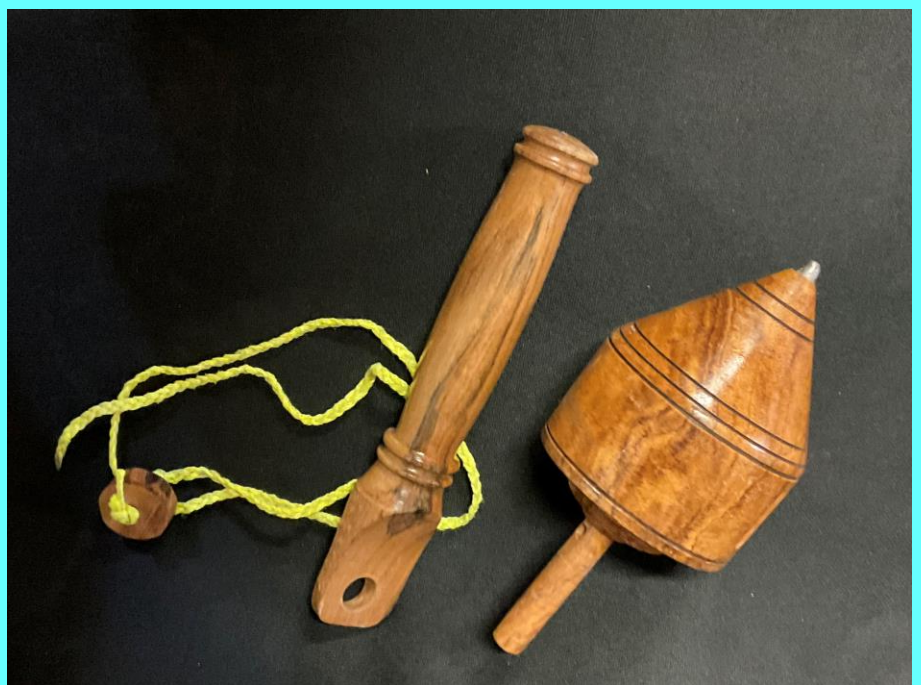
Saturday
(Tomorrow)

WORKSHOP OPEN

9.00am – 12 noon

Duty Officer:

MICHAEL DOYLE



An example of a spinning top. (this one hums a crisp musical note).

How are you progressing your spinning-top project for the whole-club turning challenge?



It just gets better as the quality shows up from one project to the next. **DENIS** made a super fine job of the Tassie blackwood bowl.

Eleven points scored from a maximum of ten for this turning project.

JOHN's first day as a new club member.

What a start!

The club's introductory project has been achieved with much success using the roughing gouge, bowl gouge, and the parting tool.

Wow!





BILL, the woodturning adventurer, made his own special chuck to hold a novelty turning.

Clear evidence of well-tuned problem-solving skills and the courage to have a go.

Googonya Bill



.Wow !

GARY's chestnut wood deep bowl is a fine example of patient Dremel tool work around the rim.

A high-quality project outcome here.



MALCOLM Porteous turned out another Tasmanian Blackwood project with its neat fitting lid and Dremel tooled etchings .

I wonder what the addition of resin-inlayed project would look like using this highly coloured wood. (next project???????)



Our **BILL** continues to surprise us with his highly practical turning projects. This time it's making good use of gnarly old wood, resurrected, shaped and dressed into a workshop hand rag holder. The rags are accessed from the bottom using a pull motion.

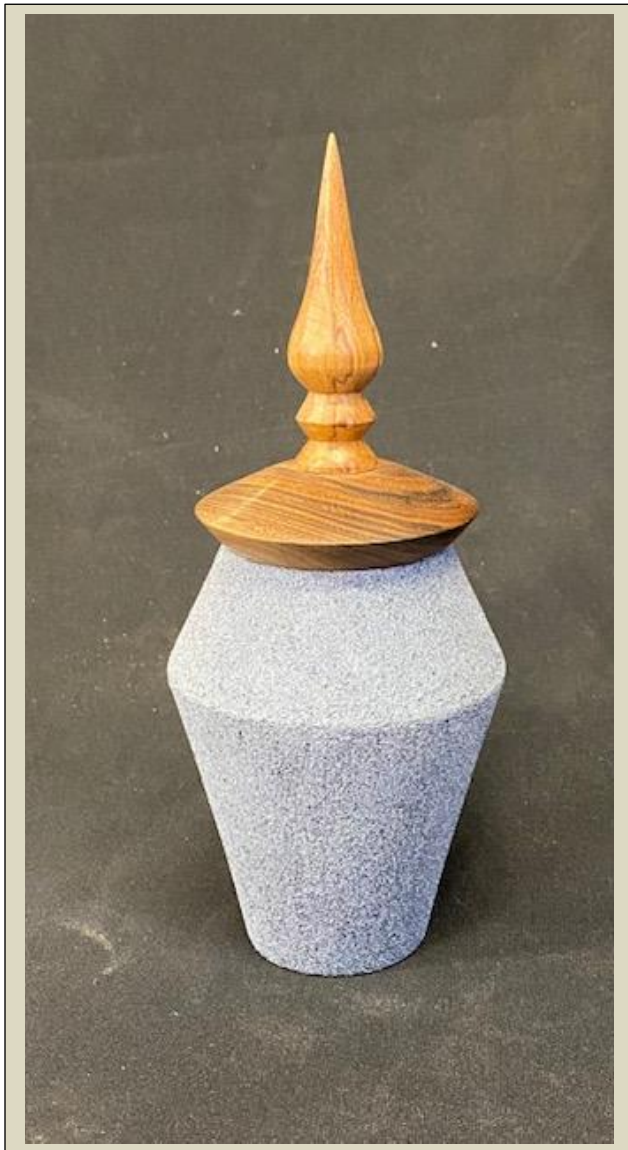
Clean hands here I come.



More goodies for the grandies

MALCOLM Vaile's specialty.

Two rimu with pine fronts and one rewarewa.



More from our MALCOLM V.

The pot is covered with non-fire glazing over macrocarpa, the top is mahogany with a rimu finial. Excellent outcome.



Highly coloured Tassie blackwood platter made by **STEPHEN O'CONNOR**.

A top turning job with a fine finish.



DAVID has made a "Cowley" model buffing system using various buff sizes.

Clever thinking here.

The BEALE system has been modified to become the COWLEY system.



Our very busy workshop on a Thursday evening.



MONIKA has been shopping (in Germany) and bought some bottle opening gadgets,

One of these gizmos is now attached to a strip of claret ash wood. Having been away for some time Monika had a crash refresher course in the use of a roughing gouge and parting tool

WELCOME BACK MONIKA

A safety message from Denis.

Just a reminder to protect our eyes, ears, lungs and fingers!

When using:

Lathe - Face shield for turning, dust mask for sanding

Saws - ear defenders, safety glasses and push stick. Keep fingers off line of cut at all times

New members must be shown how to use the saws safely.

We have a great safety record. let's keep it that way!

Keep those lathes turning!