

Website: www.hwoodturners.org

TUTOR: Clive Wilson 027 491 3868
cdwilson@xtra.co.nz

Issue No **23** Friday 8th July 2022



Hamilton Woodturners Club

Tutor's comment

Concept drawings: A useful planning idea. When planning your next project, you should consider making an initial sketch of what you want your project to look like. This approach will help you get the idea out of your head and sort out your procedural thinking about making the best possible use of the block of wood that's about to come to life on your lathe. A haphazard approach however, could mean simply mounting the wood block on the lathe, start removing wood and "seeing" what turns out.



Here's a photo of our MITCHELL who sets a fine example of someone who benefits from pre-project sketch planning.

Goodonya Mitchell

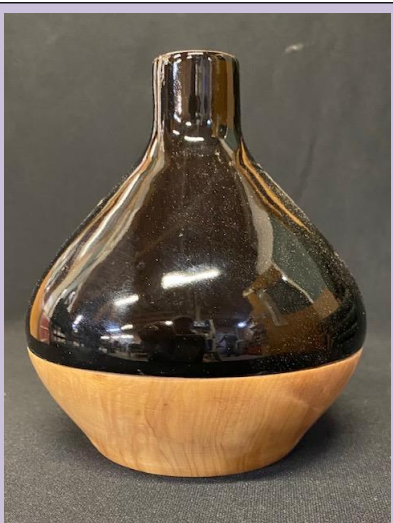
WORKING BEE

Saturday morning

9.00am - 12 noon.

Please attend if you are able.

TOMORROW at the
workshop



WOOD and CERAMIC ART

RICHARD has turned a suitable kauri wood base for a ceramic top.

A fine partnership of shapes and media here.



ALEX used a strip of Cherry blossom to create his rugged-look bud vase.

This Week's Feature Wood is **EBONY** (Gaboon)

An Ebony is a group of many species. More than 10 real Ebony species are counted into the Ebony families. Some famous species of ebony are Macassar Ebony, Brown Ebony, Ceylon Ebony, Gaboon Ebony, and many more. All species are close to each other but not the same. They differ in properties of weight, Janka hardness, grain pattern, etc.

All species of ebony are in high demand and extremely expensive. Ebony is rated as very durable, though susceptible to insect attack. Some Ebony species have a mild, slightly unpleasant odour when being worked Such as Brown Ebony.

Tree Height	About 30 feet
Wood colour	Dark brown or jet black
Finishing	Finishes well
Workability	Difficult to work due to its extremely high density.
Wood Type	Hardwood
Availability	It is not readily available

Ebony Uses



Furniture

To make high-quality furniture, wood is durable, stable, and looking good is an important quality. We have got all these qualities in ebony wood. The history of ebony wood for domestic uses is very old. **The kings and ministers of earlier times used ebony for furniture. He was crazy about its dark beauty. However, it is very expensive wood.** Yet everyone wants to use it. If you use furniture made of ebony wood in your homes, then be proud of yourself.

EBONY (Gaboon Ebony)

Colour/Appearance: Heartwood is usually jet-black, with little to no variation or visible grain. Occasionally dark brown or grayish-brown streaks may be present.

Grain/Texture: Grain is usually straight but can also be interlocked. Fine even texture with very high natural luster.

Endgrain: Diffuse-porous; medium to large pores in no specific arrangement, few; solitary and radial multiples of 2-3; black mineral deposits present; growth rings indistinct; rays not visible without lens; parenchyma reticulate/banded, possibly marginal, apotracheal parenchyma diffuse-in-aggregates, paratracheal parenchyma vasicentric.

Rot Resistance: Ebony is rated as being very durable, with good resistance to termites and other insects.

Workability: Can be difficult to work due to its extremely high density. Has a dulling effect on cutters. Tearout may occur on pieces that have interlocked or irregular grain. Due to the high oil content found in this wood, it can occasionally cause problems with [gluing](#). Finishes well, and polishes to a high lustre. Responds well to steam bending.

Odor: Ebony has a mild, slightly unpleasant odour when being worked.

Allergies/Toxicity: Although severe reactions are quite uncommon, Ebony in the [Diospyros genus](#) has been reported as a [sensitizer](#). Usually most common reactions simply include eye, skin, and respiratory irritation. See the articles [Wood Allergies and Toxicity](#) and [Wood Dust Safety](#) for more information.

Pricing/Availability: Gaboon Ebony is among the most expensive of all available lumbers: usually about two to three times more expensive than most species of [Rosewood](#). The small size of the tree, and its high demand for ornamental work may contribute to its seemingly outlandish price.

Sustainability: This wood species is in CITES Appendix II (for [Diospyros](#) species from Madagascar), and is on the IUCN Red List. It is listed as endangered due to a population reduction of over 50% in the past three generations, caused by exploitation.

Common Uses: Small/ornamental items, such as piano keys, musical instrument parts, pool cues, carvings, and other small specialty items.

Comments: So named because historically most of the wood was exported from the nation of Gabon, though today it's much more likely to be sourced from Cameroon.

There's no mistaking Gaboon Ebony as there are few woods that are deep and solid black (unless dyed), and even most species in the [Diospyros genus](#) aren't black. Other types of ebony include: [Macassar \(striped\) Ebony](#), and [Black and White Ebony](#). [African Blackwood](#) is very similar in density, color, and (unfortunately) cost, but is technically in the [Dalbergia genus](#) and isn't considered a true ebony. [Wenge](#) and [Katalox](#) are two woods that are sometimes used as an ebony substitute.

The wood is exceptionally dense, strong, and stiff, though it is considered to have moderate to poor stability through seasonal changes.



COLIN's complex segmented 5-bowl turning project.

Right hand photo shows the flip side foot. Already Colin has started another with improvements in mind.

Wow! What will the improved one look like?



TREV made a great job of his Mortar and Pestle project.

After whizzing through the club's induction programme Trev's ambitions now focus on making a medium-size bowl (Tassie blackwood) with a finial mounted lid.

All set ready to go!

GRAEME has consolidated his skill set for making wave bowls finishing this hauri wood example at home then launching into another at the club's workshop. The quality just keeps getting better too.



COVID-19 continues to find its way into our membership list. As a result, session numbers are down as people cope with the effects. This is a reminder that if you are not feeling well, then please do not come to the workshop.

For those of you who fighting the good fight I wish you a speedy recovery back to full fitness in the shortest possible time. Remember the isolating time is for seven days following a positive test outcome.

Good to note that while mask wearing is currently not compulsory almost all attendees are continuing this precaution.

What a grotty, rainy day we have today. Stay inside in the warm, dream about you next turning project and cheer for the conquering ALL BLACKS tomorrow night. Take care everyone. **Clive**