

# Turners Tidings

www.hwoodturners.org

Date:	4 August 2023	No.15
Club president:	Stephen Hawley <a href="mailto:stephenjohnhawley@gmail.com">stephenjohnhawley@gmail.com</a>	
Editor:	John Baker 0210697636 <a href="mailto:johntepahu57@gmail.com">johntepahu57@gmail.com</a>	



Its been a good couple of weeks to be hiding inside out of the weather and being creative in our workshops. We are a very creative and crafty bunch, so keep those brains ticking and lathes turning. Check out what we achieved this week in this newsletter.

We have a great new raffle underway as a club fund raiser this week. See below for the three prizes.

The Tuesday group have been busily producing tulips to be donated to the Parkinsons Foundation to support their fundraising efforts. The details for making these tulips can be found in the Creative Wood Magazine.



Guess what the Tuesday group has been doing. Dozens of Red Tulips have been created for the Parkinsons Society fundraiser. This has been a real team effort with production lines running throughout the day.

The special bunch on the right were created by Bill.



Colin has been busy playing with clever laminating



More laminations from Colin, this time with a streak of purple heart



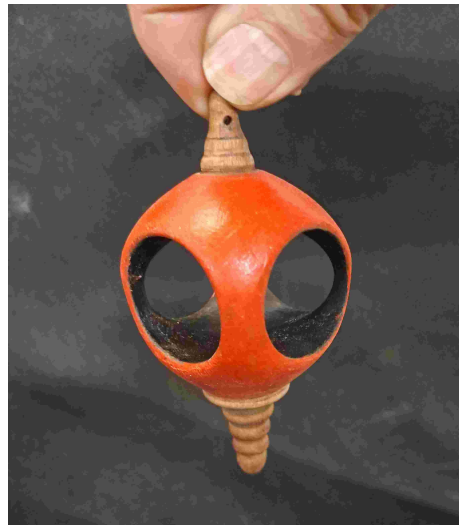
And Colin again with Wattle



Very creative Tasmanian platter from Stephen Oconnor



Dauids inside out turning just keeps getting better



Garys tricky inside out turning, or maybe not?



Dennis has beaten the off centre riddle with his cherry bowl



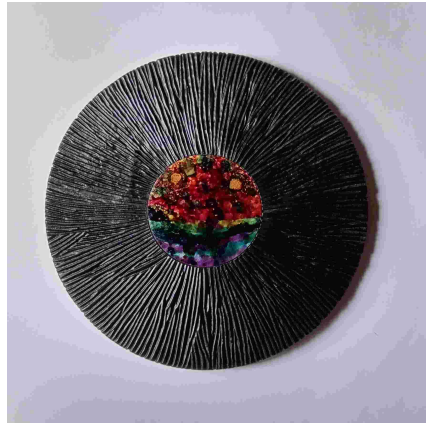
Gregs clever bud vases had us all puzzling



John C's pohutakawa bowl with embellishment on the base



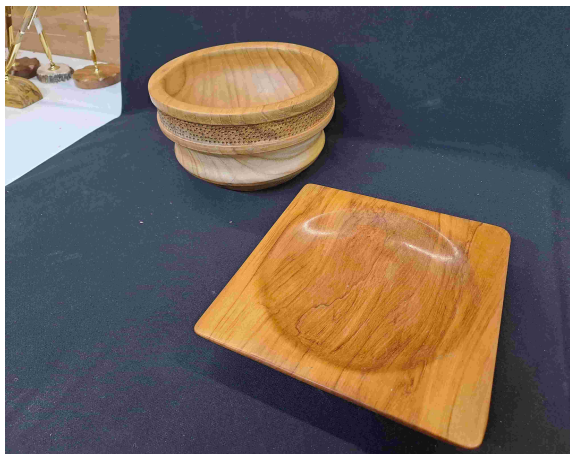
This spalted Rewarewa pedestal bowl also from John C



Another of Richards amazing wall hangings. Dyed Macrocarpa, elm insert. 335 mm diameter.



Tony has created his entry for the barrel challenge  
And also continues working with our supply of spalted Rewarewa



More work from Gary



Colin has a whole variety of items on offer



Fergus is a new turner but that doesn't stop him producing some great work. Rewarewa pedestal bowl

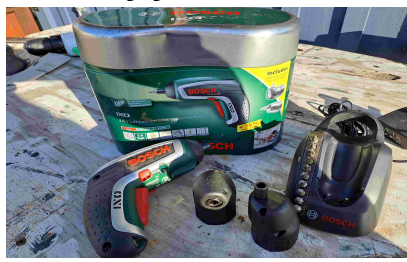


Well executed matching candlesticks from Wayne

### Raffle prizes; Buy your tickets at a club near you



Power mask



Battery Drill

### For extra points...

What chuck do we use for reversing the work to finish the base of a turning?

-----

### Last weeks answer

**Burning letters or designs into wood is called pyrography**

### FUTURE FOCUS

**1 August.**

**Art of Wood Exhibition opens. Check out Creative Wood magazine for details.**



National Association  
of Woodworkers NZ  
Inc  
<https://naw.org.nz/>

