

Turners Tidings

www.hwoodturners.org

Date:	28 April 2023	No.8
Club president:	Stephen Hawley stephenjohnhawley@gmail.com	
Editor:	John Baker 0210697636 johntepahu57@gmail.com	



Entries have now closed in the great Waikato barrel making competition. 14 entries were received, all to a high standard. The barrels were not only decorative but included a spinning top and a tippy top, all of which needed to be demonstrated..The entries were judged by Andre and Don in a comprehensive and tense process. By a unanimous decision Spencer was awarded master Cooper of the year.

Thanks are due to Colin for proposing the idea and supplying the wood

Make sure you keep an eye on Future Focus section for all upcoming events. Woodturners are a busy lot.

Happy reading.

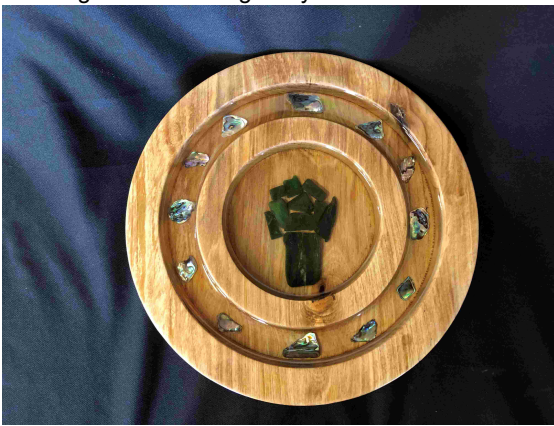




Supreme barrel winner, Spencer showing off the winning entry



A gnarly piece of kauri re-used and revived by Colin



Denis is off overseas with his souvenir of NZ. Rimu platter with pounamu and paua inlays



Bills excellent Rimu lidded pot



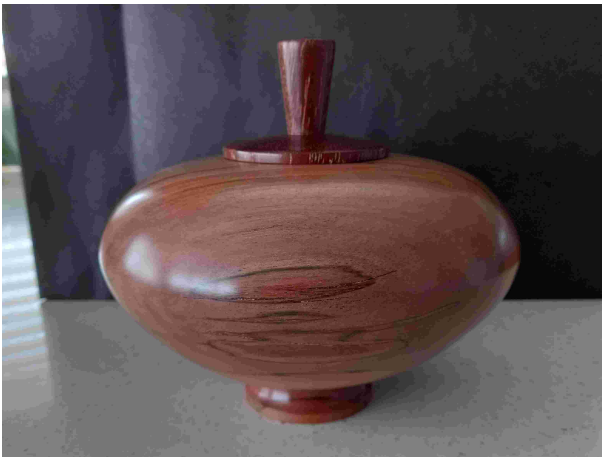
Wayne has a good supply of pohutakawa. A great looking bowl.



John C. London plane inkpot, with its very own feather



John B. Cherry bowl with various inlays



Myrtle Hollow form bowl with a small Rosewood finial from David.



And also from David. A late entry for the barrel challenge.

Export quality, as it had gone to Australia before it could be displayed on club night.



Terry Scott  WOODTURNING 

Woodturner: Woodturning Lathes Tools and Accessories

www.timberlywoodturning.co.nz

timberly@xtra.co.nz 320 Hunua Rd
 09 2977051 Papakura 2583
 02 1998493 Auckland New Zealand

FUTURE FOCUS

- 27, 28 May** **NAW Demonstration Weekend.**
784 Beach Rd Browns Bay.
- 6-8 July** **Manawatu Woodworkers Guild**
ROUNDUP 2023 (see separate email for details)
- 1 August.** **Art of Wood Exhibition opens. Check out**
Creative Wood magazine for details.

For extra points...

What is the worlds heaviest wood?

Last weeks answer.....
The keeper plate is part of the tailstock assembly
which keeps the spindle in place