

Hamilton Woodturners Club

Website: www.hwoodturners.org

TUTOR: Clive Wilson 027 491 3868
cdwilson@xtra.co.nz

The TT Newsletter Issue No 2

Tuesday 11th February 2022



Terry Scott WOODTURNING
Woodturner: Woodturning Lathes Tools and Accessories
www.timberlywoodturning.co.nz
timberly@xtra.co.nz 320 Hunua Rd
092977051 Papakura 2583
021998493 Auckland New Zealand



MITCHELL is making a photographer's assistant gizmo. ??????

He knows exactly what he wants his outcome to look like.

Intrigue abounds so we need to be patient and watch with interest as his idea evolves over time.

TUTOR'S COMMENT

We are under way for another year with three sessions each week supported by growing attendance rolls.

During the long Covid break the hard-working committee has been busy preparing for the 2022 restart.

A new DVR Saturn lathe has been installed and two more of these excellent machines will be installed in another week or so.

Heaps of consumables to support turning projects have been purchased and await the start on members' woodie wonders.

WELCOME BACK EVERYONE.

We're gunna be bigger and brighter than ever!



Safety conscious **MURRAY** ensures that he is shavings, dust and Covid protected while turning his macro wood hollow form.

Goodonya Murray!

Carnauba Wax

Members of the Hamilton Wood Turners Club are well used to using this product with many of their turning projects.

Every time the Beale polishing system is used **CARNAUBA wax** is applied to the wood. Wax plays a significant role in numerous industries.

What is Carnauba wax and where does it come from?

Farmers in Brazil grow carnauba palms in widespread plantations for the Carnauba wax industry.

Now Brazil can be a pretty hot place for people and plants. The carnauba palm protects itself from the hot sun by exuding a natural wax over its frondy leaves.

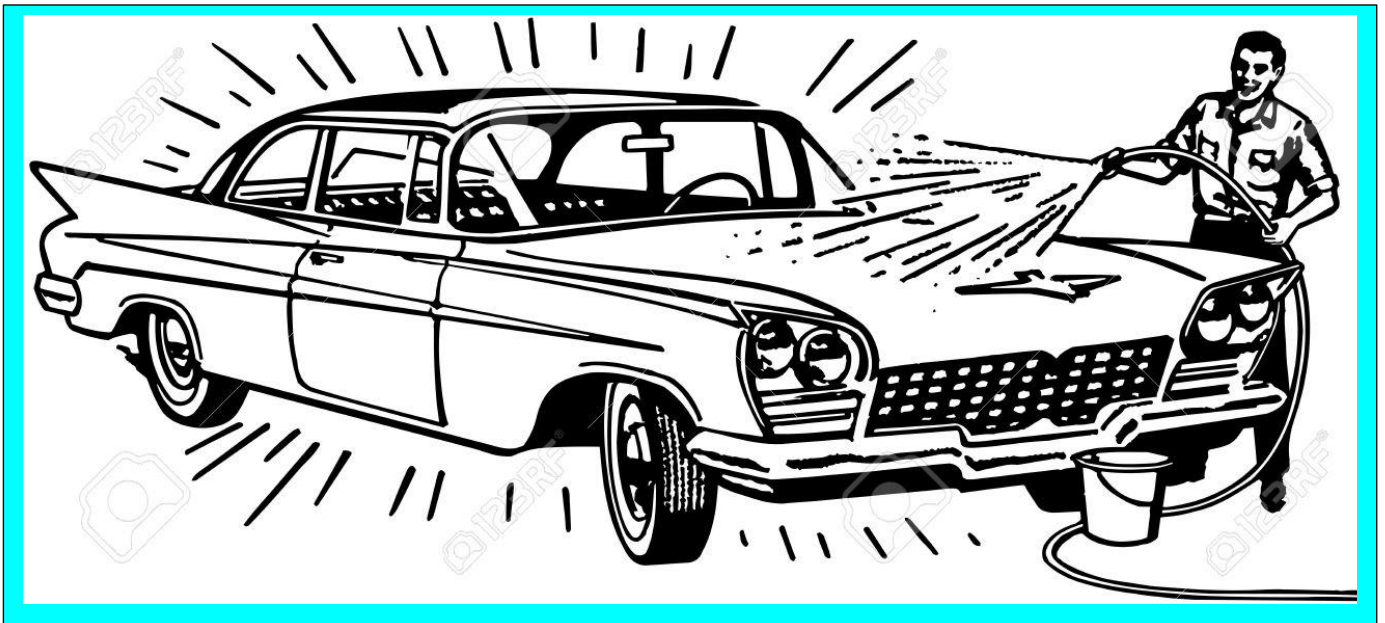


**Carnauba Palm
Farming in Brazil**

The Palm trees' leaves are dried and beaten to release the wax, which is then bleached or refined for a variety of uses. This harvesting process doesn't harm the tree, as the palm very easily replaces the fronds used by the farmers.

Carnauba wax is shiny, which is perfect for giving a glossy look to many products. It also has waterproofing qualities when applied to certain products. Carnauba wax is brittle when used alone, so it is often combined with another wax type.

Since carnauba wax is shiny, it is often used in polishes, **including car**, shoe and floor polish. It is also used as a shiny coating on produce, like apples and cucumbers. The shiny wax coating does more than just make the floor or fruit look good. It also adds a protective layer.



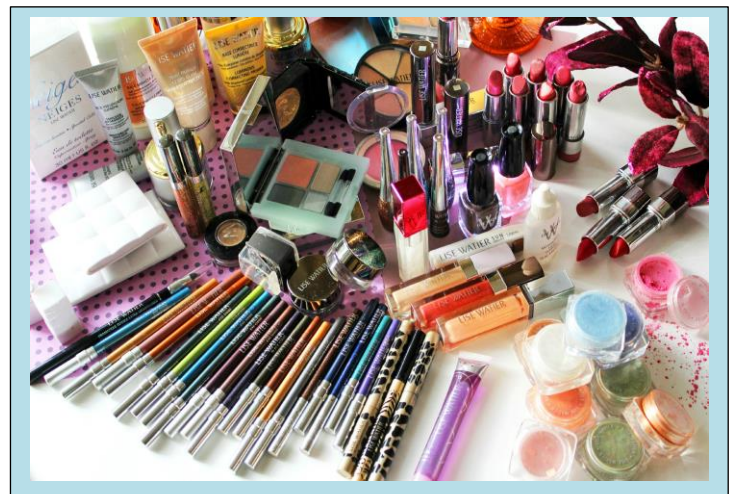
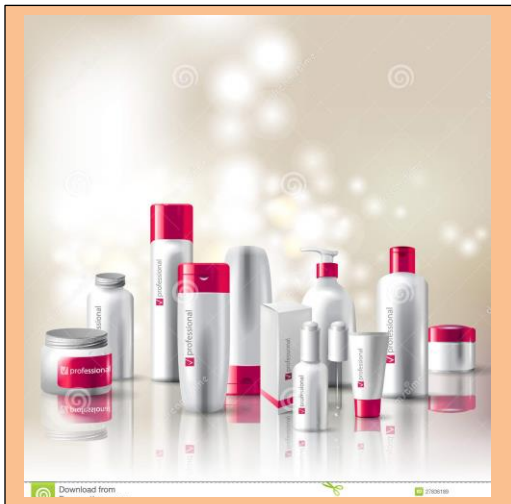
Carnauba Wax Can Be Used in Food. Yes, you can eat carnauba wax.

Food-grade varieties are safe to eat and appear in goods like candies from fruit snacks to M&M's. Carnauba wax is responsible for keeping these foods from melting and giving them their shine.

Another common food that carnauba wax is used in is cheese. Hard cheeses can benefit from waxes like carnauba, as they protect the cheese and prevent it from spoiling quickly. After you melt the carnauba, you dip the cheese in the substance or paint it on to cover the entire wheel of cheese. When it's time to eat, simply peel off the wax and enjoy!

Other Uses for Carnauba Wax

- **Cosmetics:** Carnauba wax is predominantly used to make eyeliners, lipsticks, foundations, skincare products, deodorants and eyeshadows. The substance is also hypoallergenic, which is a great feature for various cosmetic products.



- **Pharmaceuticals:** Carnauba wax is used as a tablet-coating substance for various pharmaceutical pills and tablets.



- **Leather:** Carnauba wax is beneficial for protecting leather products from water damage. The substance is hydrophobic and is not soluble in water.
- **Cars:** Carnauba wax helps protect your car and make it look appealing. The wax can protect your car from the sun's UV rays,
- makes car mirrors shine and protects the paint from various outdoor elements.



CARNAUBA wax
can leave a
glossy
protective
coating on
wood.



LEIGH and **STEPHEN** seen here catching up after a long period of workshop Covid closure.



ROBERT uses a lightweight powered mask for multi-purpose protection



WELCOME to **BILL FEARNS**

A new member for this year's **TUESDAY** session.

First shot at turning and as good as it gets.

Wow !

What a great start!

A high quality outcome here.

All the 19mm bowl gouges have been removed from the tool racks as most of these do not have tips able to be sharpened any more.

However, in the event of a turner needing a heavy 19 mm bowl gouge, a set of five only gouges will be kept in separate storage. Please discuss your need with me before using a 19mm tool.

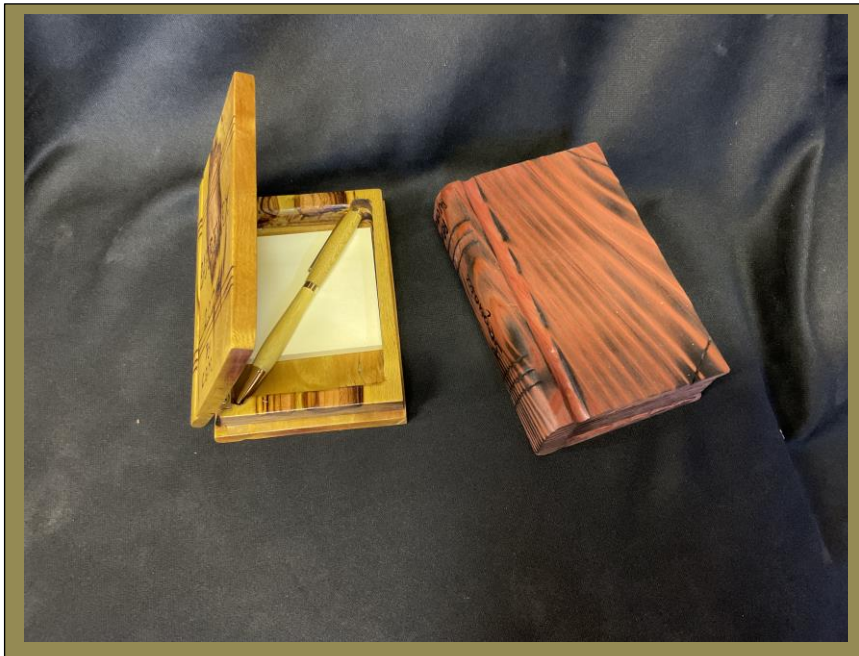
Cheers **Clive**



RICHARD JACKSON, our give-it-a-go guru, has turned a small, lidded rewarewa wood pot.

Then he experimentally brush-painted two coats of a non-firing glaze to give it that ceramic look. Good idea eh.

The taller turning is a three-wood idea for a toothpick dispenser. Another winner from the Jackson workshop.



COLIN MCKENZIE must wake up every morning with a sense of purpose to his day.

If he is not in his workshop turning out woody wonders then you might find him in his garden producing fine crops of tomatoes. Colin very generously shares his wares with his Thursday session colleagues. Goodonya Colin and many thanks.

Colin's wooden books shown above (left)... made from barberry, while the one on the right has been fashioned from a block of sequoia wood.

Yayyyy! We are under way again. See you all next week **Clive**