

LOCKDOWN EXPRESS No 7

Just counting the few hours left to when we move out of Level 4 to Level 3.....Then will be counting the hours to when we move out of Level 3 to Level 2.....Then will be counting the hours to take us to Level 1. (I can't remember Level 1..!!!!!!)

Freedom here we come! (Level Zero)

Woodturning projects

Looking for an inspiration... a project to become involved in?

Go to: www.sawg.org.nz

Click on **Projects**

Make a choice- read the instructions and GO!



Here's a shot of **WAYNE** (hiding... somewhere in the photo) dealing to one of his garden trees, most of which will be chain-sawed into firewood. Keep the best bits Wayne!

The earliest stage of a wood turning project.

Gathering the wood and putting it into storage.

It is really important that **end sealer is applied** soon after felling and process into blocks or slabs. Any inferior bits are best consigned to the firewood bin.

Choose an airy cool spot to stack the drying (**seasoning**) wood for as long as it takes.

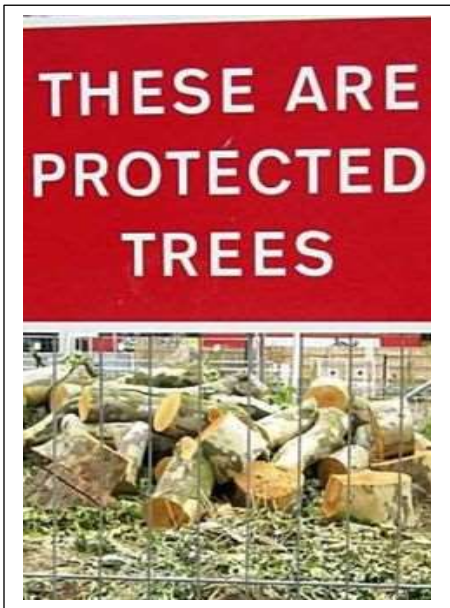
General rule: The thicker the slab the longer the drying time. "Wet" turning into a rough shape will considerably shorten the drying time.



More funny signs photographed by world tourists.



STEPHEN O'CONNOR used an oblong shape of Tasmanian Blackwood to make his very clever turning of a three-point pot with lid and finial. Another serious challenge well met.



Another example of RICHARD's seriously clever creations.



RICHARD JACKSON's hollow-form turnings made from *Radermachera sinica* wood. In New Zealand this wood is more commonly known as **China Doll**. Note the clever enhancement of the numerous cracks.

Radermachera sinica

Common names: Canton Lace, **China Doll**, Serpent Tree, Emerald Tree, Asian Bell Tree, Bean Tree or Mountain Bean, Chinaberry Catalpa

Radermachera sinica is a fast growing evergreen tree, native to the subtropical mountain regions of southern China and Taiwan. It can reach heights of up to 30 m tall and can have a trunk diameter of 1 m. In cultivation in frost free climates, this tree usually grows to a much smaller 10 m tall.

The leaves are bipinnate, 20 to 70 cm long and 15 to 25 cm broad, divided into numerous small glossy green leaflets 2 to 4 cm long.

The long trumpet-shaped, fragrant, crinkly petaled, white or yellow flowers (7 cm long) bloom in panicles at the leaf axils or branch ends in spring and summer. These develop into long slender, bean like, seed capsules up to 30cm in length.



insert: China Doll flowers, seed pods and leaves

That's LOCKDOWN EXPRESS NO 7. (No 8 coming up as soon as enough contributions are sent to me).
There are some quite outstanding works of wood art being produced by our club members. I am quite proud of your progress and achievements. Keep up the great work.

Maybe it's because the Level 4 restrictions are giving you all more time to experiment and add those special enhancements to your turnings.



RICHARD JACKSON's pyrographic black bowl.

The wood has not been identified yet.

The inside has been dyed with black food colouring and finished with a mix of black crayon, beeswax and mineral oil. *(Richard must have been a chemistry student when at secondary school).*

Congratulations for your fine work.

Careful artistry and a creative winner!



This bowl would hold quite a few peanuts eh!



I wonder what size roughing gouge this bloke is about to use?