



TT



2019 - Issue No 36 Friday 15th November

Website: www.hwoodturners.org

Tutor: Clive Wilson 027 491 3868

TT's Top Turning this Week



DON hit the jackpot with this turning. Rim-to-rim transition, design, the sanding job and its applied finish are special features. The only mystery is that we are not sure of what type of wood was used.
WINI wood maybe?



“Before and after “

MELISSA, our guru of practical turnings, reckoned a new handle for her push lawnmower was needed.

Here's a picture of the old and the new models.

Need something for your home and garden?
See Melissa.



MITCHELL displayed a load of patience when making his kauri bowl complete with etched design.

Goodonya Mitchell - a job well done.

All Welcome

**Saturday morning free turning session
16th November (tomorrow)**

**9.00am - 12 noon
Support person: ?**

DAVID made his first pen using a pohutukawa wood blank.

New experiences with micro mesh sanding helped achieve a silky smooth finish.





Welcome to another new member.
GRANT BEALES

Grant made a flying start to his wood turning journey by turning a handle for a knockout bar.

Grant is successfully “Rubbing the bevel” already so methinks progress will be rapid.

Goodonya Grant!
An excellent start.

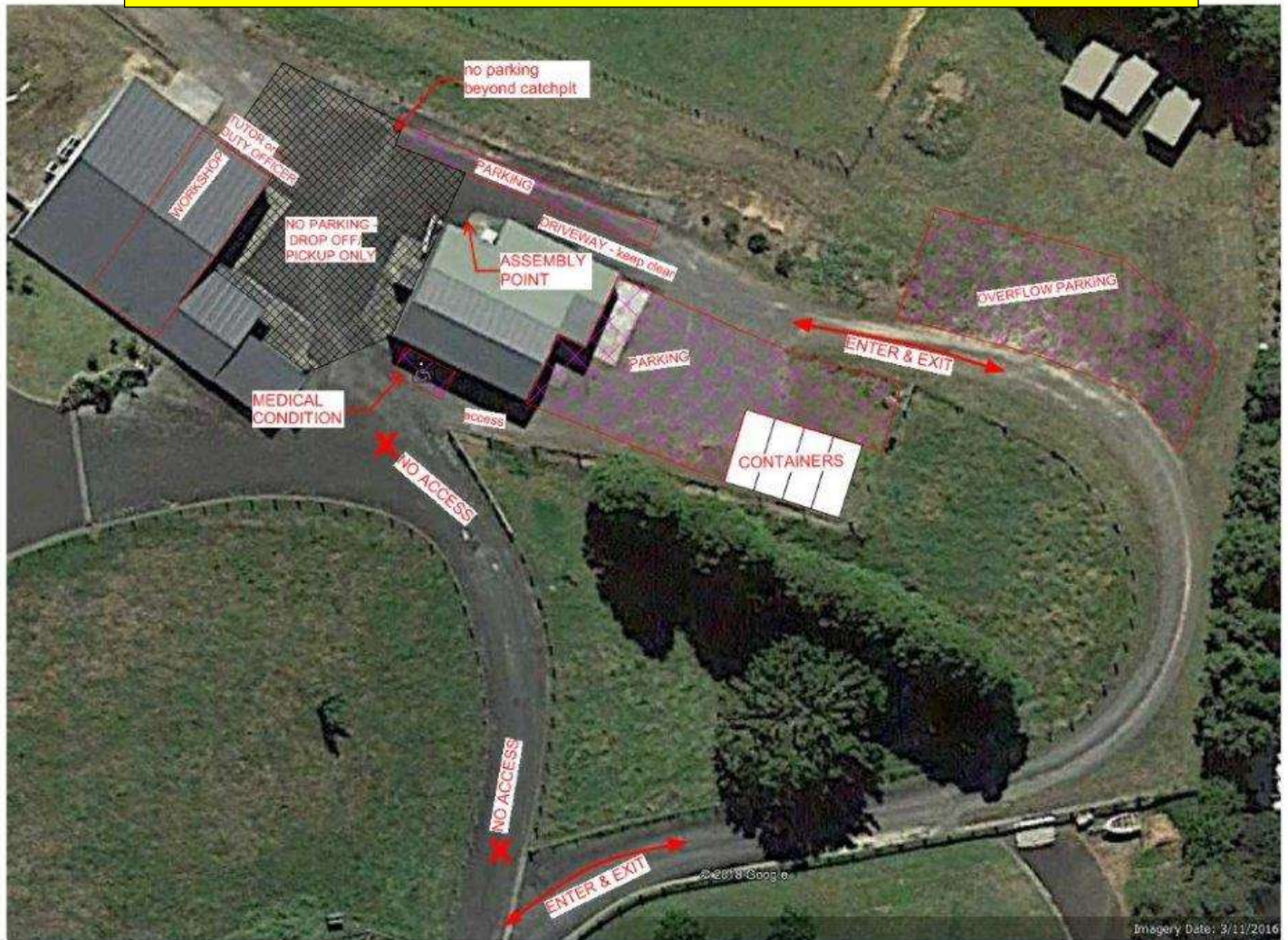


Holey Moley!

Our **GARY** continues to turn these little treasures and his mini bowls are always finished to a high-sheen polish.

BUT.....now for a switch to some serious toy making.

WOOD TURNERS PARKING



Hamilton Woodturners Club - site access, parking and assembly point

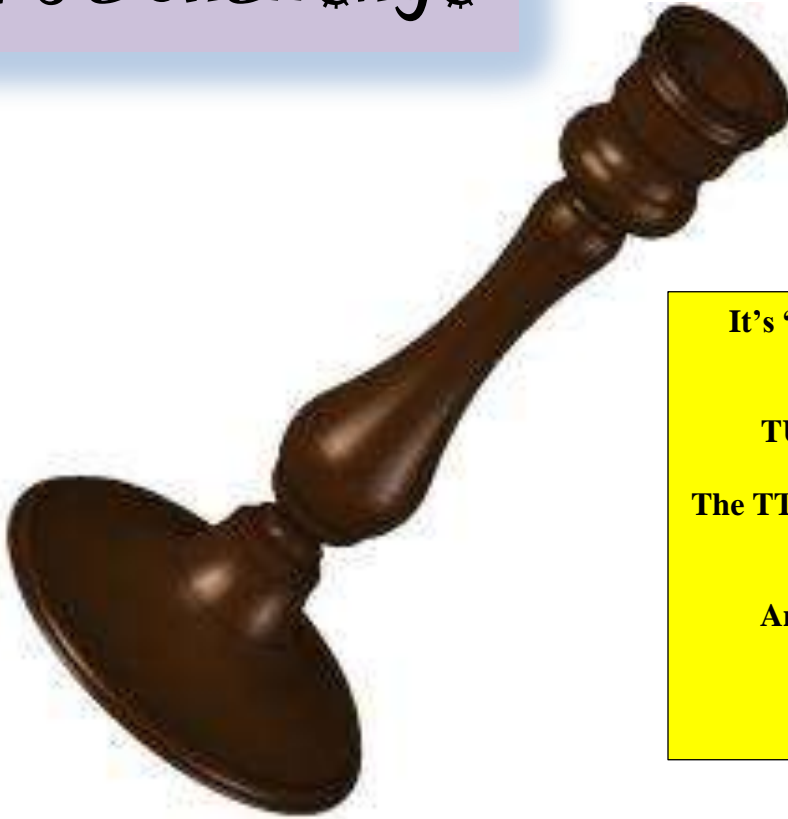
PARKING:

Members are required to park vehicles in the places as indicated on this aerial view map.

NOTE: That all vehicle comings and goings must use the unsealed loop entrance.

Prior to finding your eventual parking place it is OK to make a temporary stop to offload tool boxes etc for the day's turning.

It's a challenge



It's "Have-a-go" Challenge month.

TURN A CANDLE HOLDER

The TT is offering a special prize for the winning entry.

Any shape, any size, any wood

Closes on November 30th



Wow **BRADLEY!**

This is an excellent turning of a macro wood bowl.

A curving transition of rim to rim and a great finish.

A "Goodonya" gong here.

See you next week.

Clive