



www.timberlywoodturning.co.nz

TERRY SCOTT
NZ Agent for
BURNMASTER®
Also
Woodcat

See website for more
Contact: timberly@stra.co.nz for an info sheet or ph: (09) 297 7051
Remember, if I cannot break it, no-one can!

Issue No 12 - Friday 20th April

027 491 3868
Clive Wilson
(Tutor)

2018

THIS WEEK'S TOP TURNING



JAMES, from our Tuesday group, produced this extra special turning using a large block of green-tinged swamp kauri.

A great shape and a highly polished finish are special features. Well done JAMES

The TT's Information section - New Zealand Trees



Pittosporum eugenioides, common names are lemonwood or tarata, is a species of New Zealand native tree. Growing to 12 m tall by 5 m broad, it is conical when young but more rounded in shape when mature. Its leaves are mottled yellow-green with curly edges and a salient bright midrib, and have a strong lemony smell when crushed. It has highly fragrant clusters of attractive yellow-cream flowers in spring, followed by distinctive black seed capsules.

Some ways Maori used the tarata tree in early NZ

MEDICINAL:

- Resin mixed into a ball with gum of sow-thistle and chewed (Colenso 1869b).
- Resinous, balsamic gum - used for bad breath (Brett's Guide 1883; Goldie 1905).
- Leaves chewed into a paste to cure raw places on a saddle-sore horse (Cowan 1930)

It is found throughout New Zealand's North and South Islands along forest margins and stream banks from sea level to 600m. It is New Zealand's largest pittosporum.



Quick growing Tarata can be shaped into an attractive shelter or border hedge.



**CAELAN
HARRIS**

Has been welcomed into the TUESDAY group.

His first project in making a knockout bar was an immediate success.

Woo Hoo !

Here's our **JAN**, a regular member of the Tuesday group, with her particularly well made *slimline* pen.

Jan chose green tinged swamp kauri to complement the gold coloured pen parts.

Looks pleased eh!

(and rightly so)



This week's useful video clip



(A pen makers special this week)

www.woodturnerscatalog.com

Click on.... *Hand Tools*....then

Turning Tools

Bowl and Spindle Tools

Carbide Insert Turning Tools

(scroll down)

Easy Wood Tools – Easy Pen Turner

WATCH VIDEO

I have used one of these pen making devices for several years and now wouldn't use anything else.

Learn about the **R2 radius tip**. Note how the tool is presented to the work. (tip at centre and horizontal on the tool rest. I have been using Easy Wood tools for years and this tool is especially easy to use. This is a pen maker's valuable asset. Would you like one of these?

Talk to Terry Scott at Timberly Woodturning. (R2 tungsten tip) Cheers, **CLIVE**



Another **DAVID MOLLEKIN** designed Pepper mill rolls off the production line. This is one of a pigeon pair of mills destined for someone's dinner table.

Great shape and finish features.

RICHARD JACKSON has been busy in his workshop making a range of woodie goodies using sheoak, blackwood, young kauri and mahogany. The stems of the goblets are made from scrap pallet wood that have been stained with Indian ink. Richard, you're a whizz! Goodonya!





KATRINA HAYMAN, one of our new members, is all smiles as she proudly displays her very first woodturning project.

A knockout bar!

This project introduces new turners to a range of basic skills and a project where “rubbing the bevel” becomes an all important part of the learning process.



CORALIE returned to the Hamilton Wood Turners Club for a short time but now has to return to her homeland. We have enjoyed having Coralie as a team member and wish her happy woodturning in France. The above pictures show some of the learning Coralie picked up while attending our sessions. Bon Voyage Coralie!

MELISSA can turn very small objects using our mini-micro tools. The object on the right is mad from ivy wood



The Friday Flashback

Who made these in September 2015?



MELISSA is keen to have a go at any idea related to woodturning.

Here's our versatile lady operating her "bow-lathe" to turn a clothes peg.

Amazing!



SCOOPS and more SCOOPS

Here are some of the entries in the scoop-making challenge.

Project Judge, **Richard Jackson**, will announce the four selected winners next Tuesday

Good luck to all and many thanks for entering into spirit of the idea of replica turning.

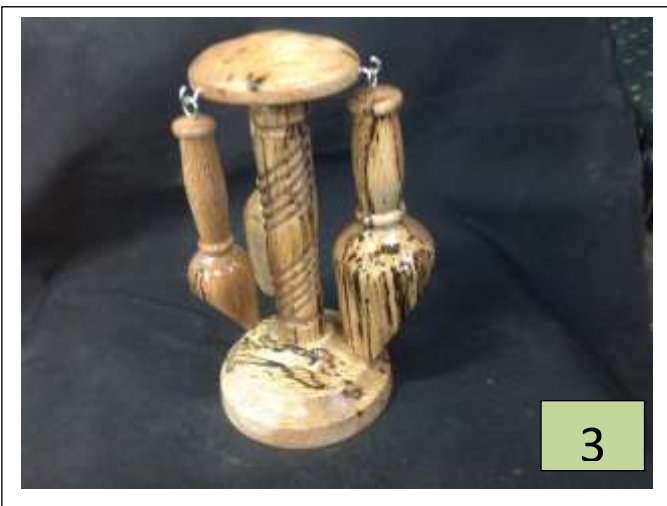


MADELEINE completed her laurel wood bud vase during Thursday's session. This is a very special turning from someone so very new to using a wood lathe. The vase's shape, its superb finish and your high standards have to be admired.



ROSS from our Thursday session turned this very thin-walled bowl. It's a bit of a mystery about the variety of wood but the "fiddleback" grain wave may provide a clue. Can a reader help here?

Careful work and the NEAGE approach wins every time. Goodonya Ross!



COLIN'S CORNER

1. White maire beer mug
2. White maire platter
3. Spalted rewarewa scoop tree

Colin spends hours of enjoyment in his workshop making a wide range of woodie goodies. The above turnings are examples of his high level of skill. Goodonya Colin!

We are currently enjoying high roll numbers for our evening sessions. This means that the demand for equipment can create additional pressures.

Members are asked to return materials to the CORRECT storage places as soon as the task with the item has been completed. Having to search for tools and items of equipment frequently during sessions is frustrating and not a good use of time.

SAFETY:

1. Have you had your band saw test yet? If not then organize this as soon as possible.
2. Do you need a "refresher" session on bowl gouge sharpening? Can you use the new CBN wheel with confidence? Help is available from any of the club's long-standing members – just ask.
3. Do remember to wear a full face mask when using the lathe to remove wood.
4. You MUST have hearing and eye protection when using the band saws
5. Do you know where the first aid cabinet is stored?

Cheers,
Clive